


Cemented carbide - G grade

Line up ... G1, G2, G3, G4, G5, G8

General cemented carbide.

“EVERLOY” cemented carbide is well known as high quality and performance around the world.


Be often adopted as various versatile tools and mold parts.
Excellent balance of wear-resistance, toughness and machinability.

 Explanation

Outstanding wear and crack resistance by coarse grained WC.

 Note

Be careful of corrosion problem under corroding environment.

 Applications


Snapping, Bending, Spinning, Powder compacting, Cold rolling, etc.

Cemented carbide - TB grade


Line up ... TB6, TB7

Cemented carbide for impact-resistance.

Be often adopted for versatile tools and mold parts which need impact-resistance.
Excellent durability for breakage caused when EDM.

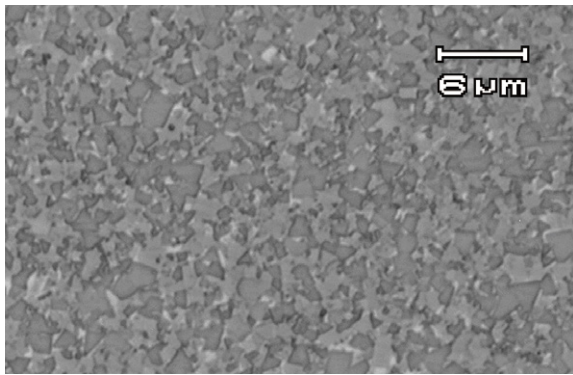
 Explanation

Outstanding wear and crack resistance by coarse grained WC and high cobalt content.

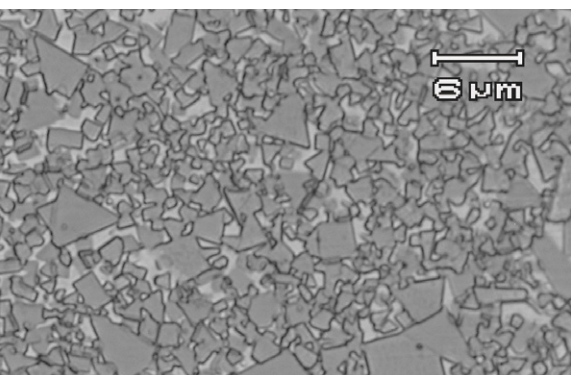
 Applications

Cold forging mold parts, etc.

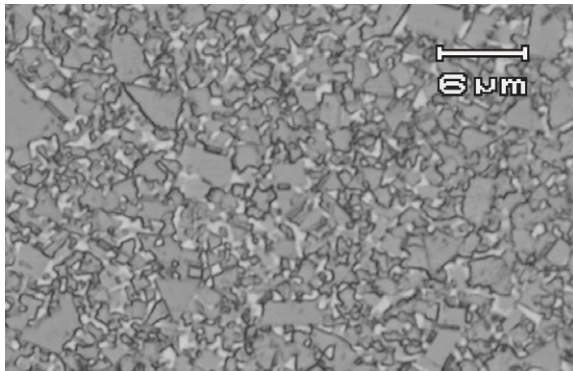
Micrographs of the G grade and TB grade



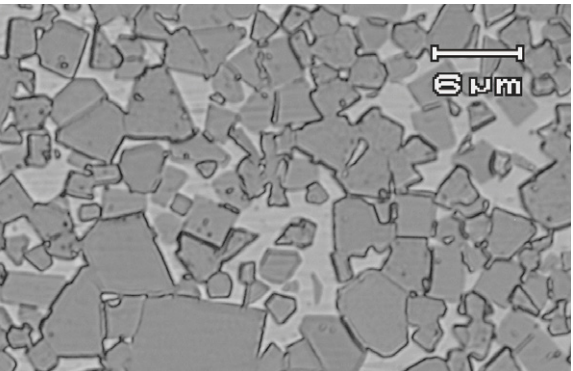
G1



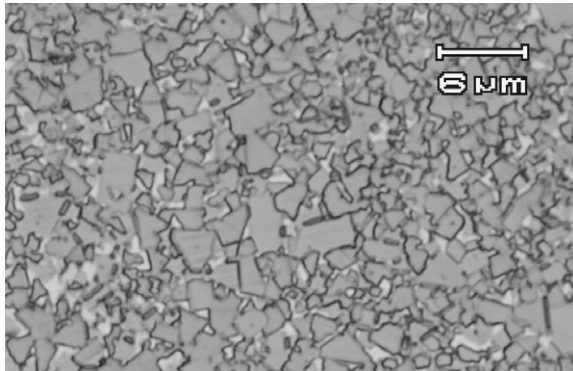
G5



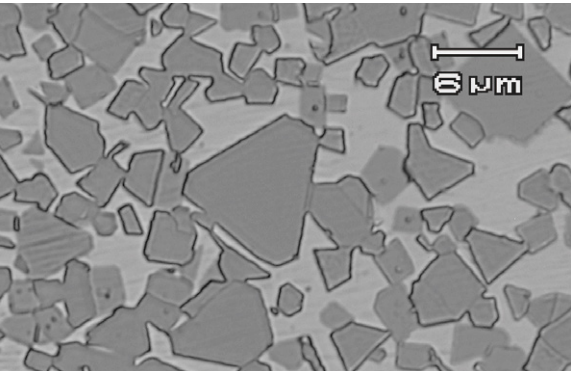
G2



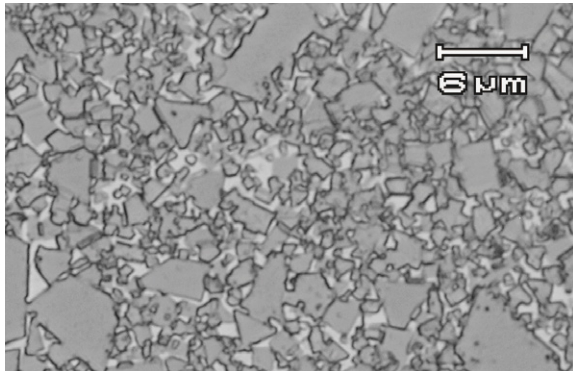
TB6



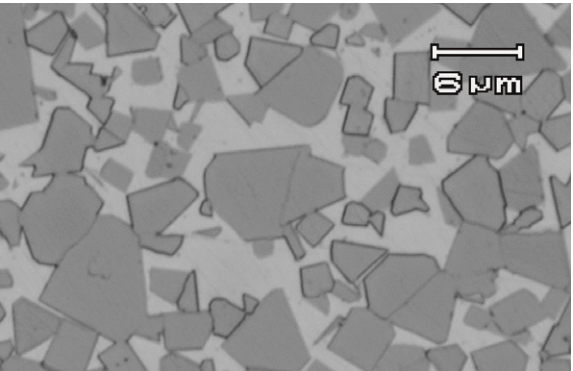
G3



TB7



G4



G8

By metallurgical microscope (×1000)